

18/10/2024



BLUECHP  
NSW Office  
Suite 3A, 12 O'Sullivan Road  
Leumeah NSW 2560

Our Ref: N0230324 - CQTE.01A

Dear Gareth,

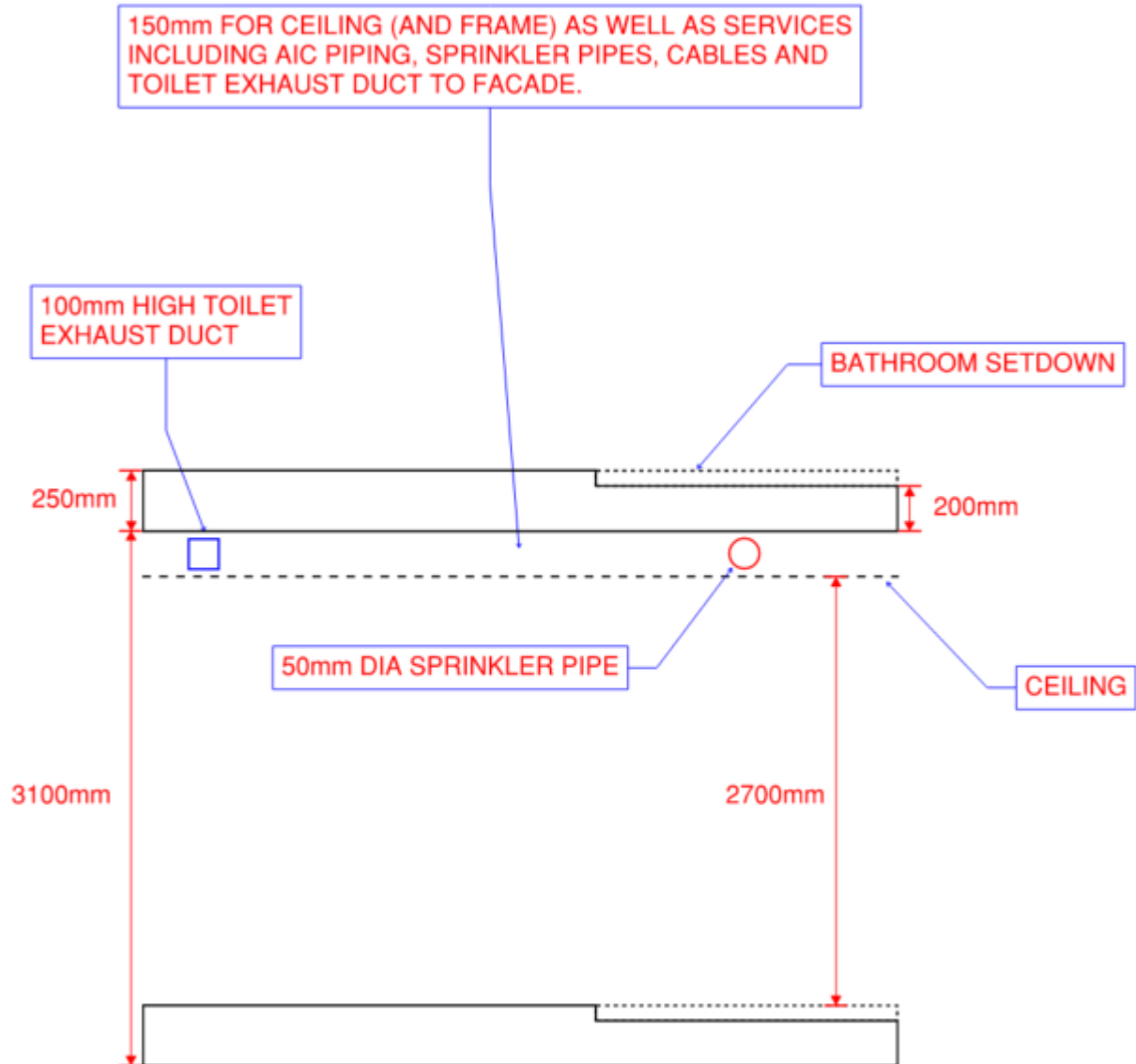
### 3100mm Floor to Floor height

**Project:** Lupin Avenue, Fairfield - DA294.1/2023  
**Address:** 15 Lupin Avenue  
Fairfield East NSW 2165  
Australia

The below image outlines and confirms the 3100mm floor to floor height and the allowances and co-ordination between the various building elements.

In summary we have the following allowances for the building elements.

- 250mm slab to allow for structural integrity, fire rating as well as set downs for bathrooms
- 2700mm ceiling height
- 150mm for ceiling frame and services reticulation including mechanical exhaust duct, air conditioning pipework to wall mounted split units (not ducted units), 50mm sprinkler pipe, water and gas pipes, electrical cables.
- Some bulkheads may be required under the wet areas for sewer pipework. The wet areas are generally located in the same position on each floor and this will assist in the co-ordination and housing of of sewer pipework.



Yours sincerely,

Greg Chambers  
Managing Director